

# Common Cutout Switch

## Green Switch Innovations



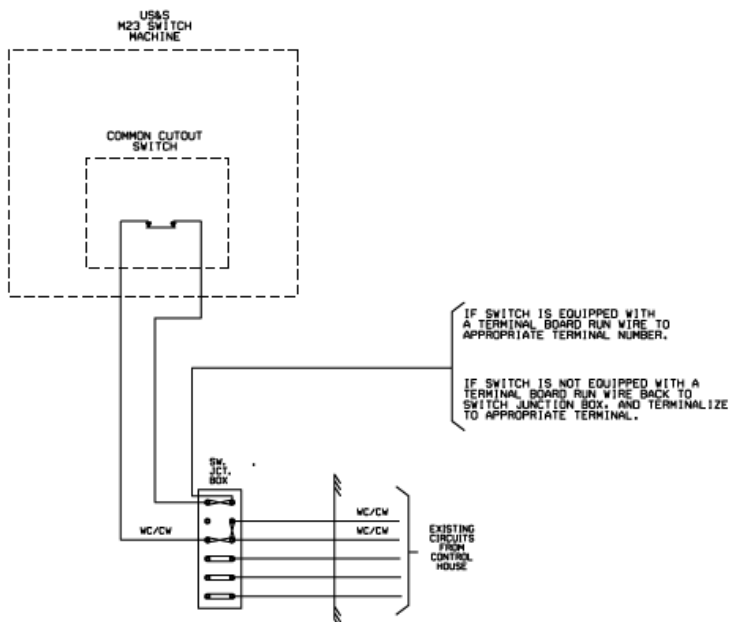
### Common Cutout Switch Features:

- Removes motor battery from switch machine
- Allows signal force to work on switch safely

### Installation

- Remove mounting bolt from switch motor bracket. (See below)
- Align CCS mounting hole and reinstall switch motor mounting bolt.
- Route 2c. cable into switch junction box.
- Service cable and install eyelets.
- Remove connecting strap from "CW" terminal, the one which feeds from the control house.
- White wire should be installed over "CW" wire from control house.
- Black wire should be installed over "CW" wire to switch machine.
- Insert key in switch, for normal operation place key in **"NORMAL"** position.
- To remove power from switch machine place key in **"TEST"** position.
- The key and key switch have a mating detent which must be left in the machine for normal operation.

Length	Width	Height	Weight
3.00"	3.50"	3.50"	2.70



BOLT



For sales assistance please contact  
Patco Industries, Inc.

4830 52<sup>nd</sup> Avenue

Kenosha, WI 53144

(262) 658-3590

(262) 658-3593 – Fax

info@patcoindustries.com

www.patcoindustries.com

