

US&S Switch Machine Ordering Information

Company Name: _____

Company Contact: _____

Purchase Order#: _____

Machine Type:

- M23A
- M23B
- M3
- Other: _____

Volts:

- 20VDC
- 110VDC

Hand Configuration:

- Right Hand
- Left Hand

Control Type:

- 3 Wire
- 5 Wire

Gear Ratio:

- 528:1 (26/34 Sec.* - 20VDC)
- 360:1 (15 Sec.* - 20VDC)
- 360:1 (8 Sec.* - 110VDC)
- 189:1 (4.5 Sec.* - 110VDC)

**Switch over time measured in accordance with AREMA (AAR) Manual Part 12.2.5. These times will vary depending upon motor terminal voltage and machine operating load and conditions.*

Contact Configuration: = †

- Normally Opened †) #
- Normally Closed †) #

Internal Lock Rod (if ordering see next page):

- Please specify part# _____

Internal Point Detector Rod (if ordering see next page):

- Please specify part# _____

Paint:

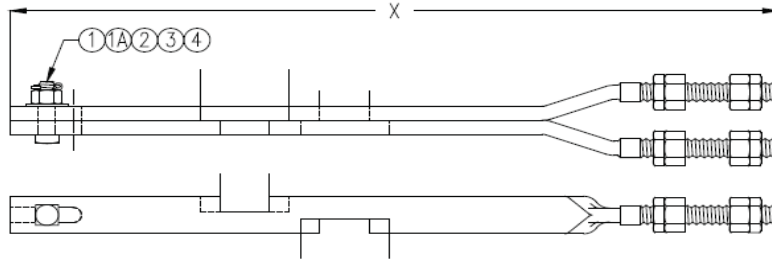
- Black
- Silver

Aluminum Covers:

- Yes
- No

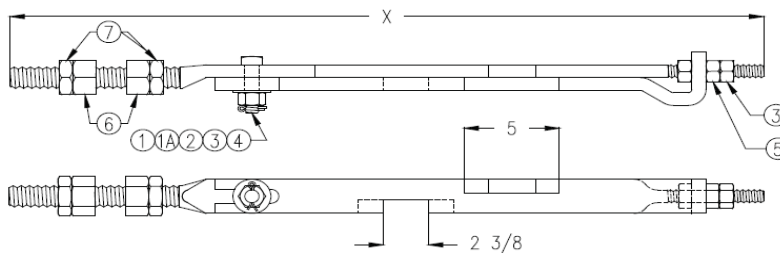
Special Instructions: _____

**Internal Lock and PD Bars for M23 Switch Machine
w/Patco Part Numbers**



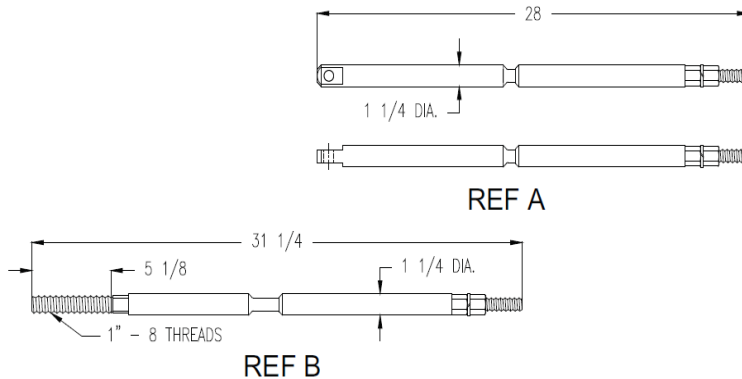
ADJUSTABLE NARROW NOTCH LOCK ROD, 4 3/8" to 6 1/4" point stroke, X = 36 1/4"
7 1/2" thread length, 2 3/8" Narrow Notch.....PAT-X-224934

ADJUSTABLE WIDE NOTCH LOCK ROD, 4 3/8" to 6 1/4" point stroke, X = 36 1/4"
7 1/2" thread length, 2 1/2" Wide Notch.....PAT-X-816005060



ADJUSTABLE NARROW NOTCH LOCK ROD, LH, 3 1/2" to 6 1/8" point stroke, X = 47 7/8"
10 3/4" thread length, 2 3/8" Narrow Notch.....PAT-X-258643

ADJUSTABLE NARROW NOTCH LOCK ROD, RH, 3 1/2" to 6 1/8" point stroke, X = 47 7/8"
10 3/4" thread length, 2 3/8" Narrow Notch.....PAT-X-274570



REF A) POINT DETECTOR BAR, LUG END
3 7/8" to 6" point stroke.....PAT-X-284475

REF B) POINT DETECTOR BAR, THREADED END
3 7/8" to 6" point stroke.....PAT-X-285907